



# Callouts: overall

**Total callouts for 2019 = 1916 – highest on record again**

(including turtles, seabirds and other species).

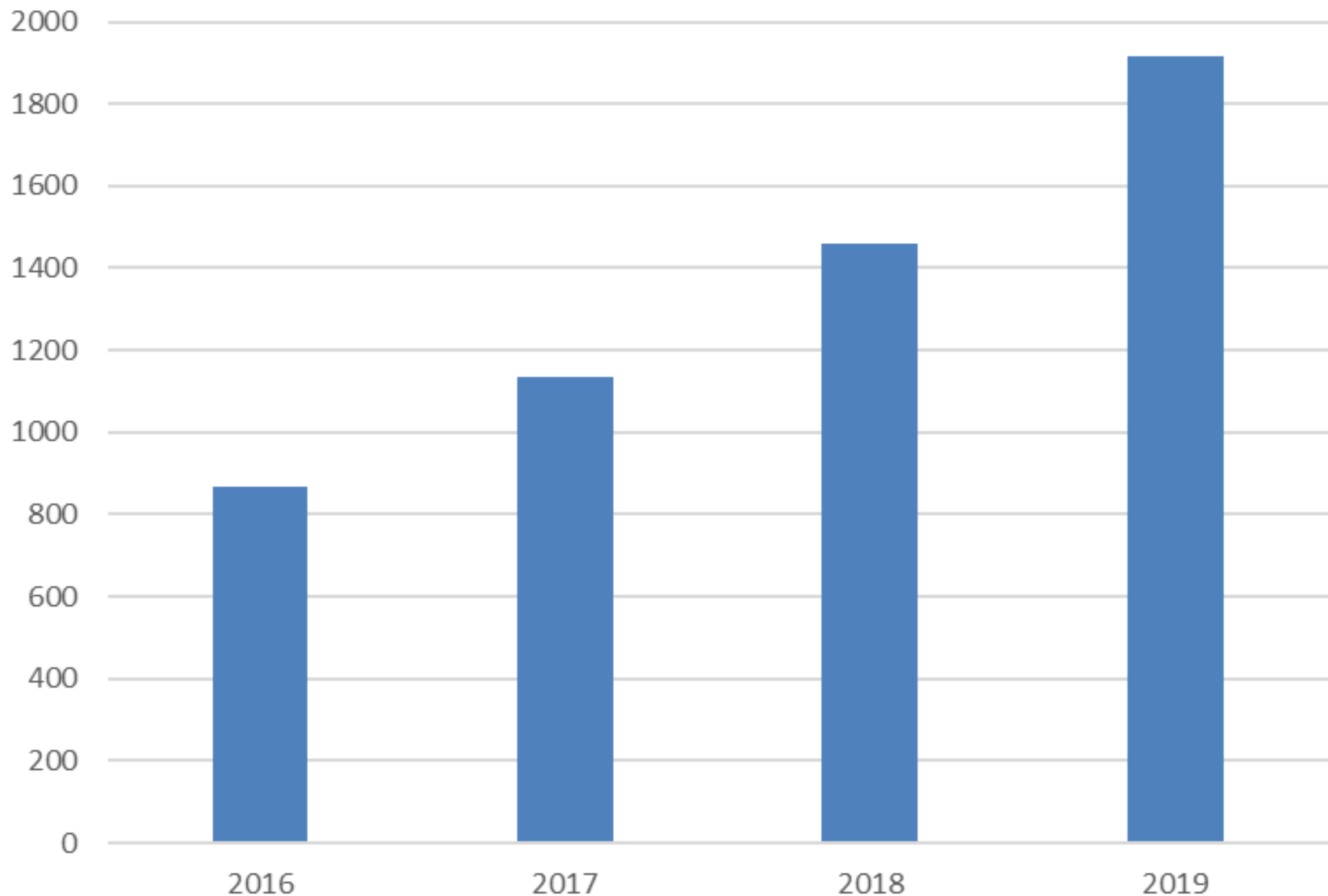
In 2016 we had 874 callouts,  
in 2017 we had 1136 callouts (30% higher than 2016),  
in 2018 we had 1458 callouts (28% higher than 2017),  
which makes 2019 24% higher than 2018.

If this trend continues then we should expect in excess of 2000 callouts nationally in 2020 for the first time.

The rise in callouts is largely driven by rapidly increasing awareness of BDMLR, along with increasingly frequent, severe Atlantic winter storms driven by climate change, and apparently poor health in the East England common seal population.

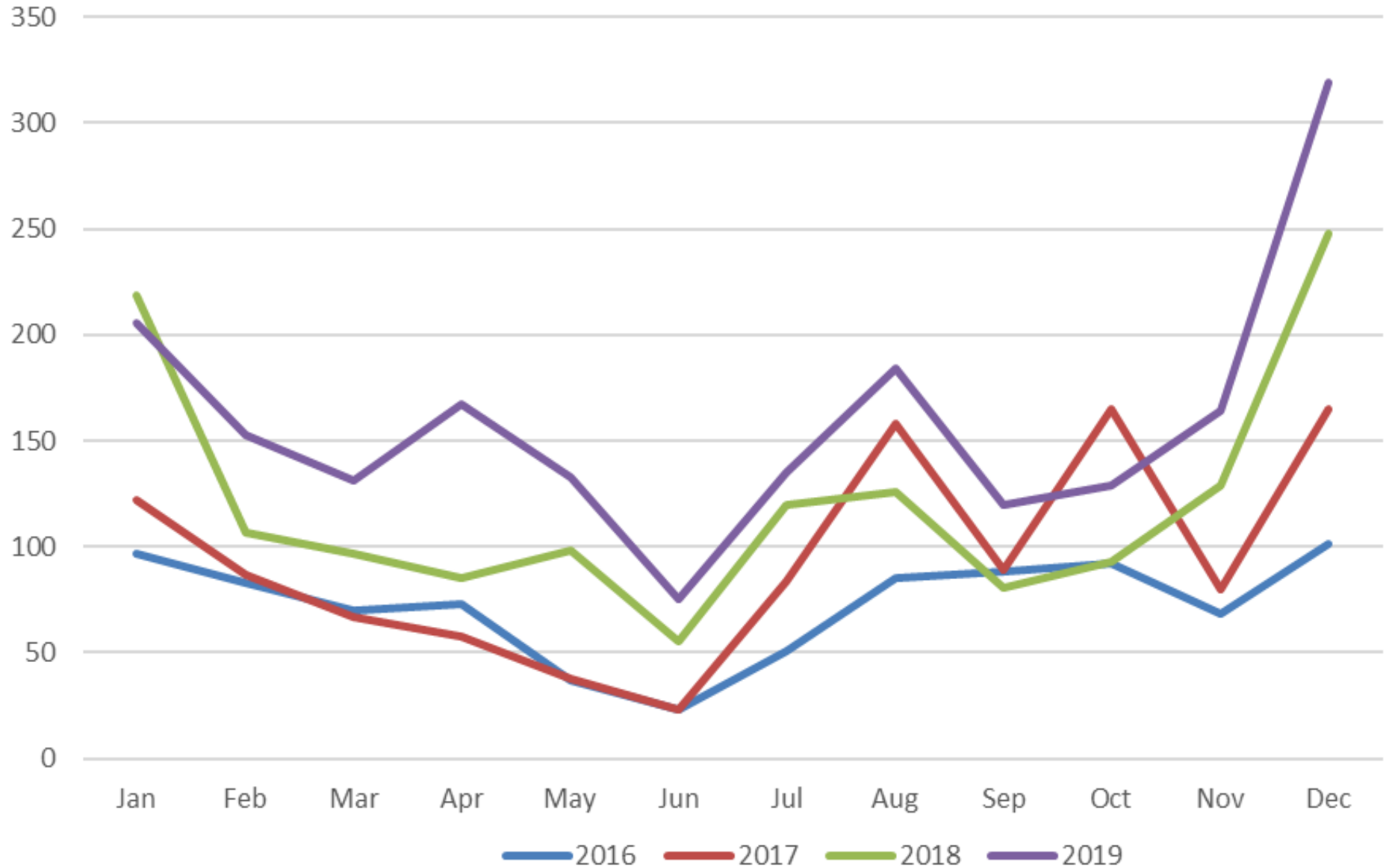


# Callouts: overall annual



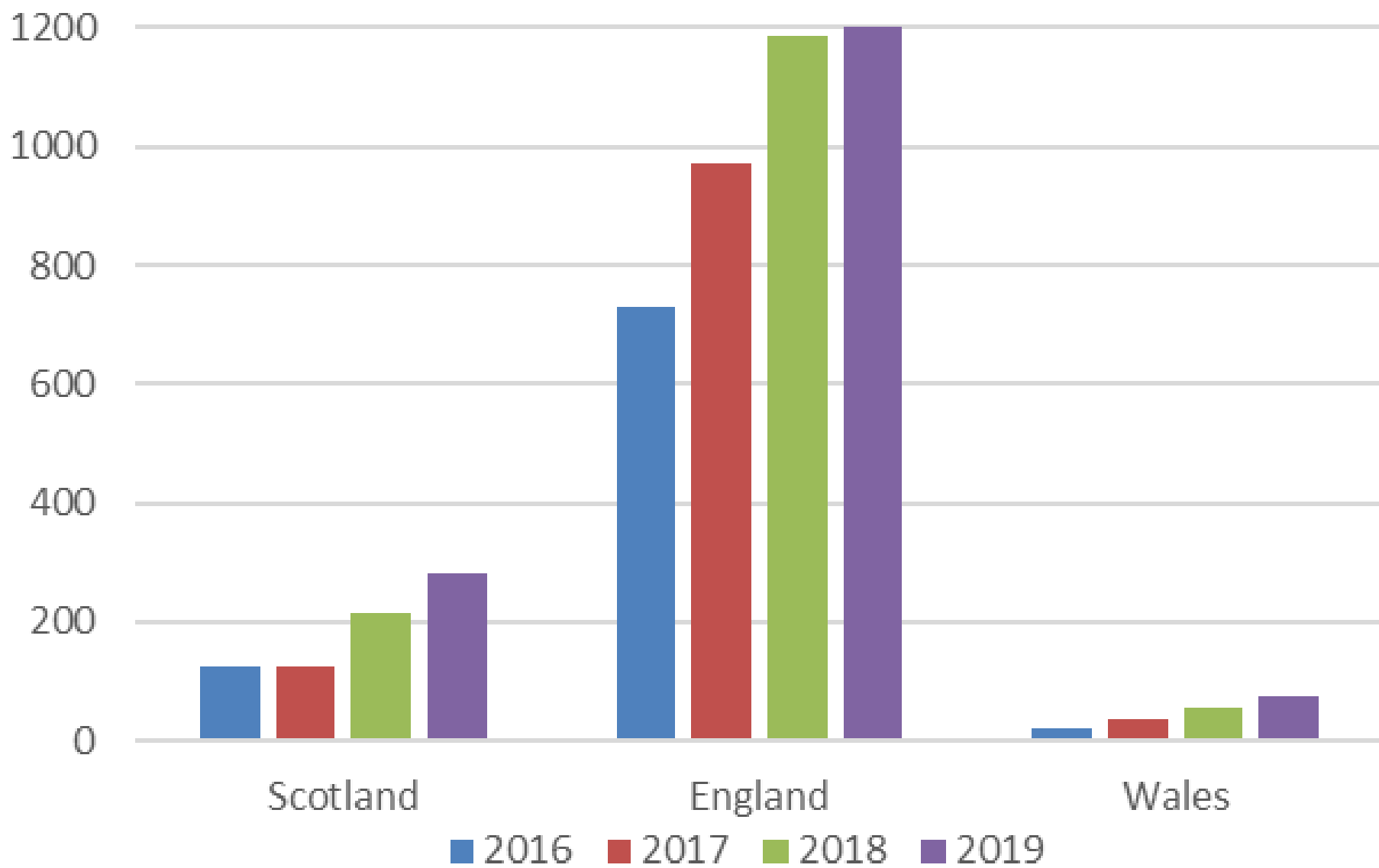


# Callouts: overall monthly



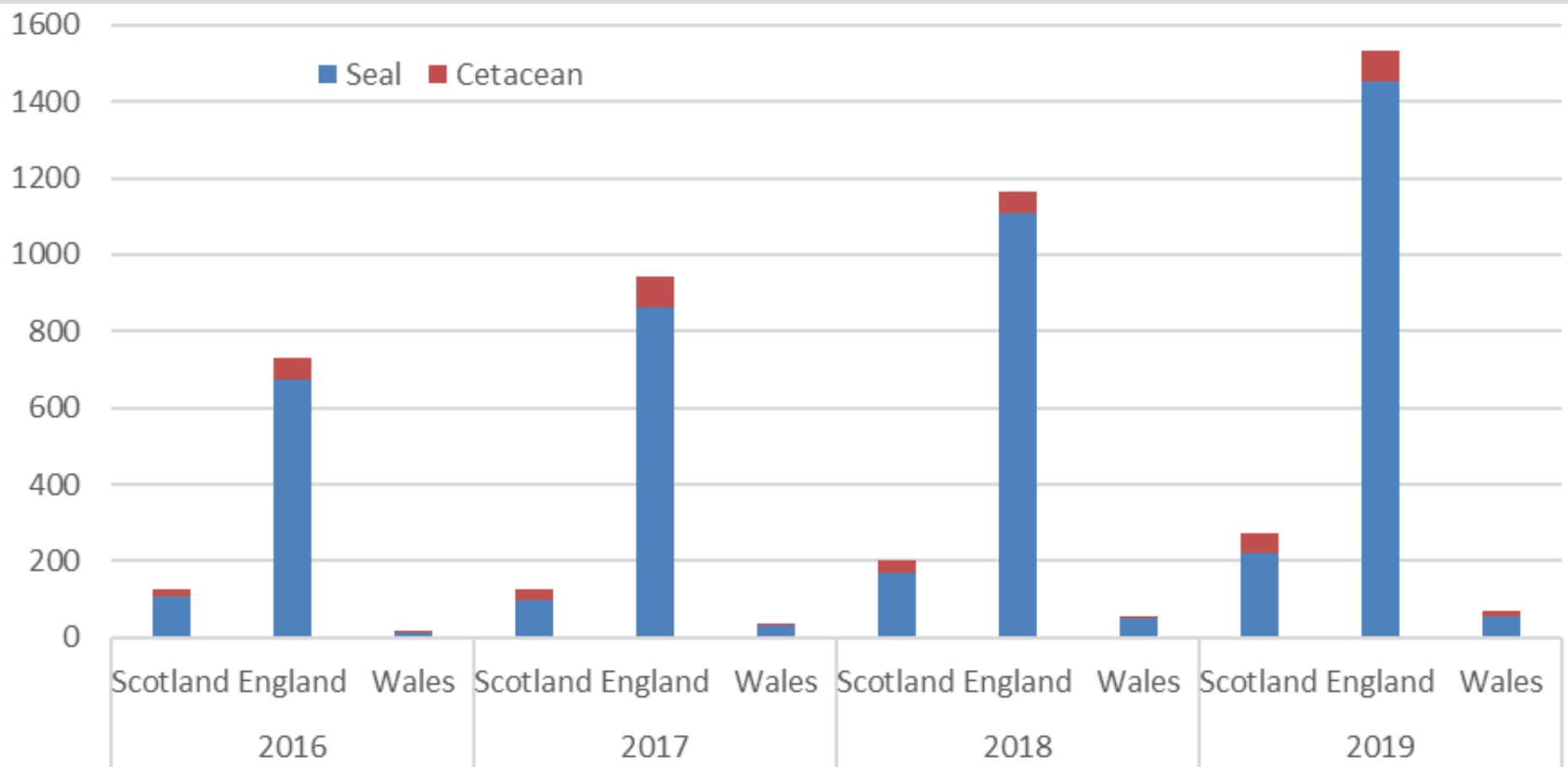


# Callouts: countries



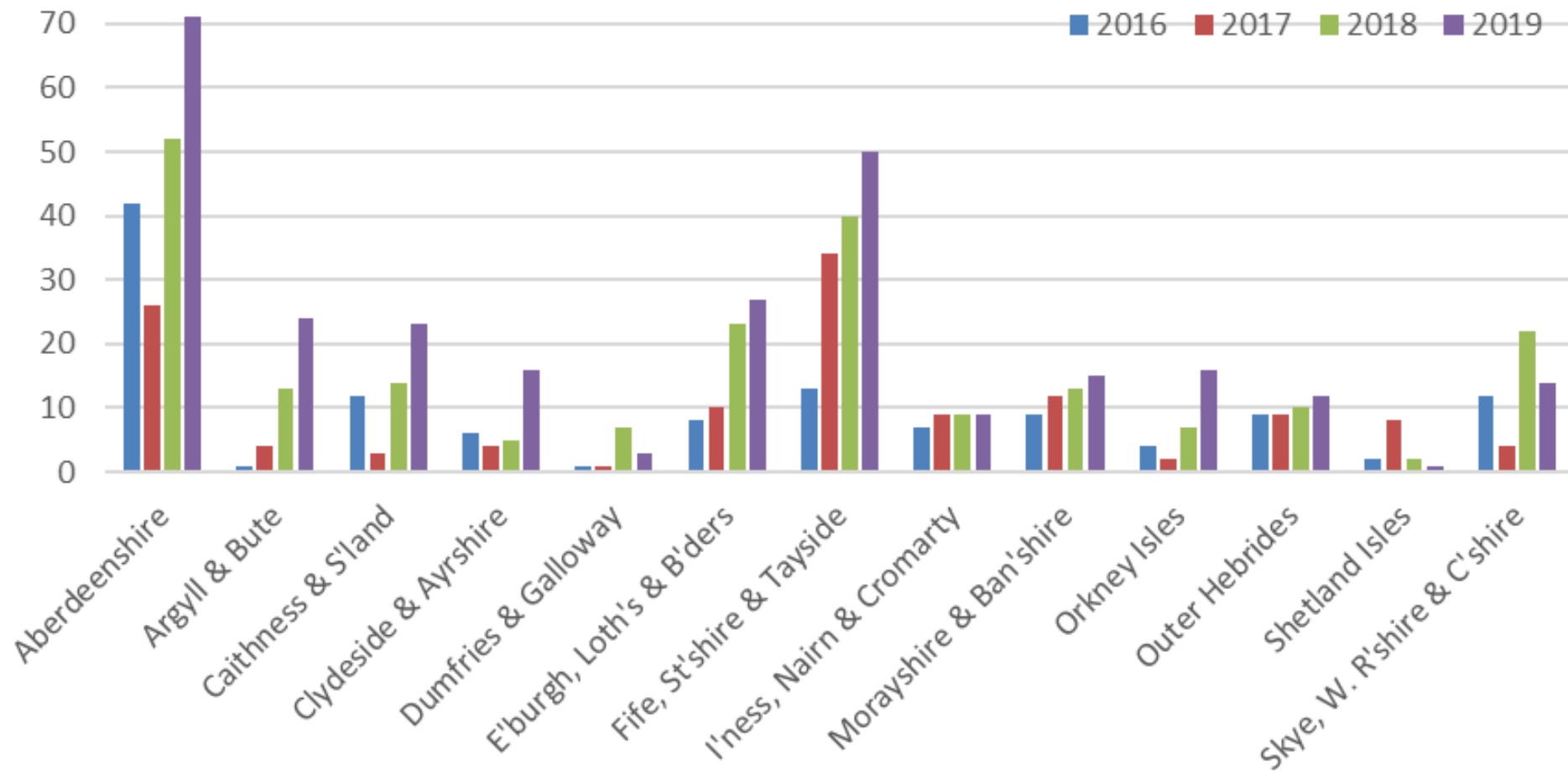


# Callouts: countries



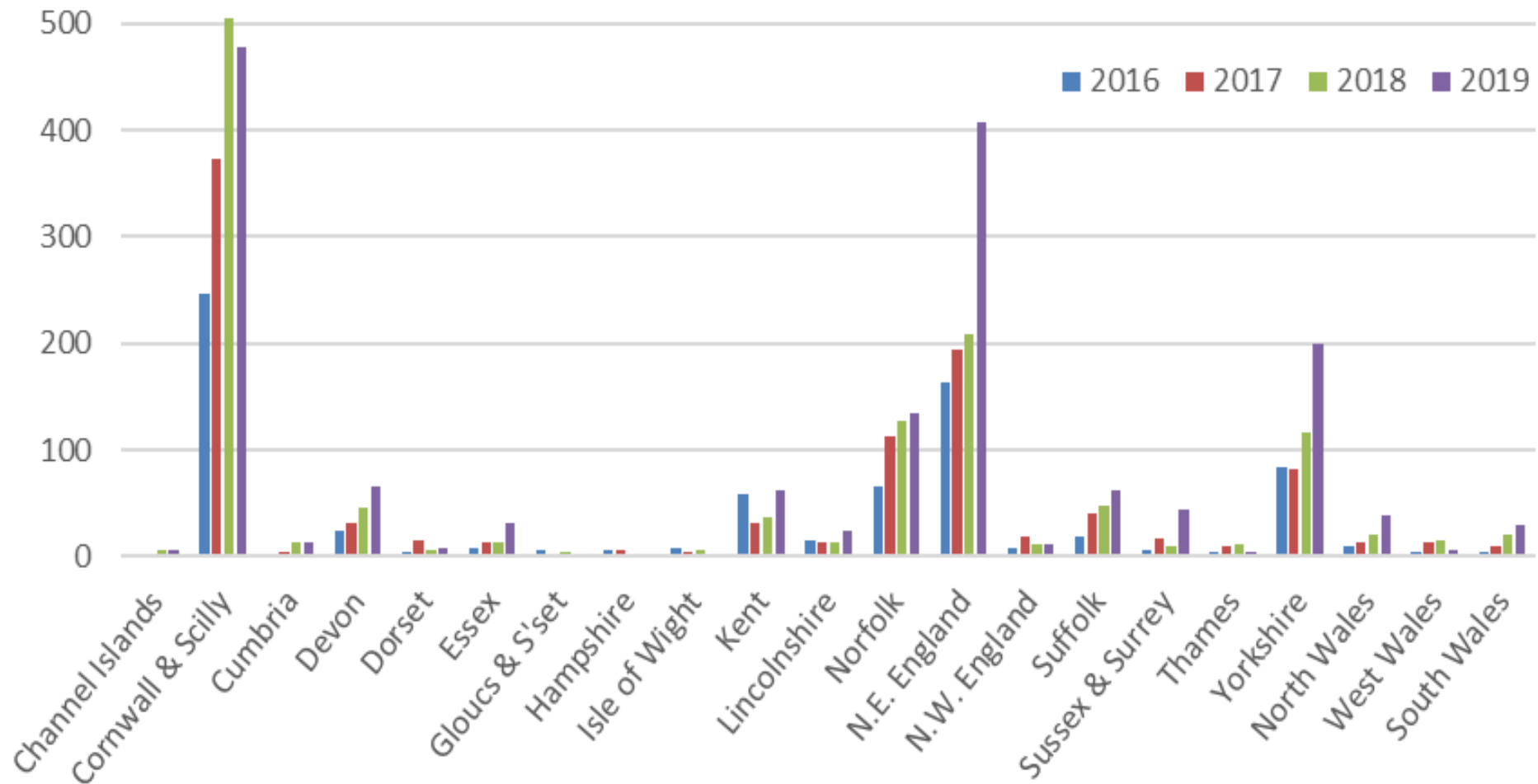


# Callouts: Scottish regions



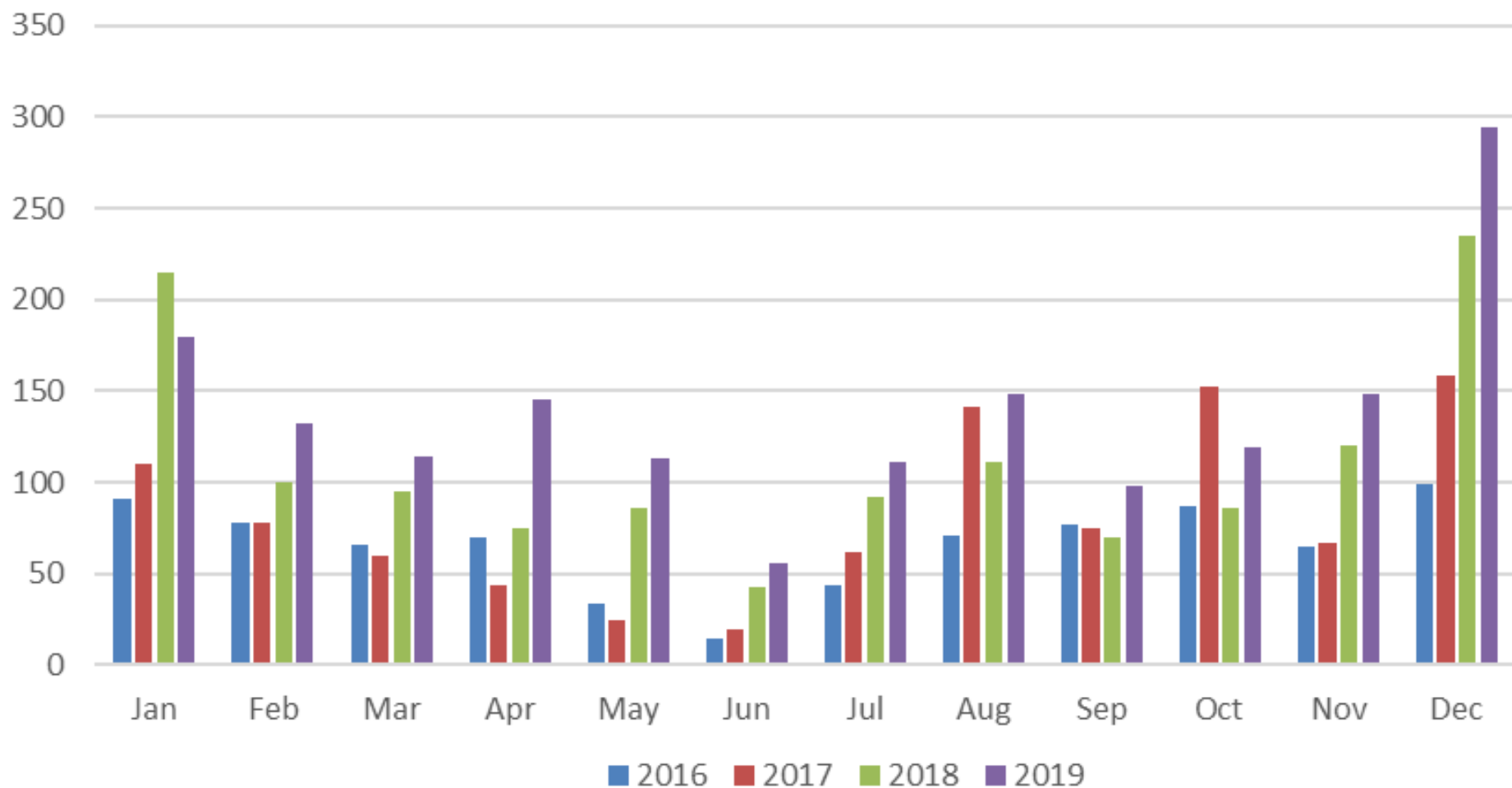


# Callouts: English and Welsh regions





# Callouts: pinnipeds by month







# Callouts: pinnipeds by species

